

# Environmental Noise Kit



## Protection From The Elements

### KEY FEATURES

- Internal power for to 10 days.
- Protection from wind and rain.
- Quality materials and robust construction.
- Self contained with rechargeable battery.
- For use with the CEL-630 Series of sound level meters.
- Simple broadband or comprehensive frequency analysis meters available.
- Time history data logged to the instrument.

### INTRODUCTION

Casella CEL's environmental system is designed to give protection from the elements for medium or long term unattended monitoring. Whether simple or in-depth measurements are required, an appropriate meter from the CEL-630 Series can be selected for the application.

The system is completely stand-alone, with the internal battery lasting 10 days on a full charge. The microphone is covered by an acoustically transparent rain shield that also prevents noise measurements being effected by noise from to wind up to 5m/s.

The environmental enclosure is small and unobtrusive and the lightest of its type on the market, allowing the kit to be easily carried to the required location.

### The Environmental Kit

The CEL-6824 kit case encloses the sound level meter, battery, power management system. A microphone extension cable (up to 30m long) connects the kit case to the microphone enclosure (CEL-6737). The enclosure can be tripod mounted.

The microphone extension cable, enclosure and mounting tripod must be ordered separately. See ordering information below.



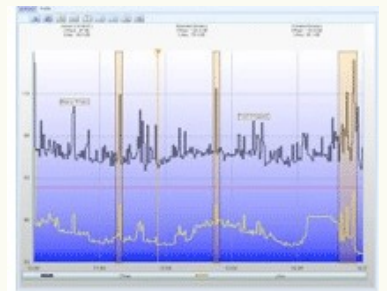
### The CEL-630 Series Sound Level Meter Range

A 140dB measurement range comes as standard, making it ideal for long term measurements. It can be purchased as a broadband, octave or 1/3 octave unit and with a Class 1 or Class 2 microphone, depending on your requirements. The unit logs noise parameters for environmental monitoring at selectable time intervals. The CEL-630 is easy to use with the ability to store and recall data. The unit is capable of storing more than 1 years worth of data before reaching memory capacity.

### Casella Insight Data Management Software



Data can be downloaded on site to give comprehensive graphing and analysis of stored data. Reports can be easily generated or data moved to other applications. Casella Insight uses a tree system to allow data to be dragged and dropped to named locations within the tree, whilst the data is stored in a secure database.



### Ordering Information

CEL-6824	Weatherproof kit case for standard items
038096	Heavy duty tripod and carrying case
CEL-6737	Outdoor wind and rain protection system for mic/preamp
C6717/X	Waterproof microphone extension cable (X= length in meters: 5, 10, 20 or 30m)
B155	20Ah rechargeable battery pack (10 day battery life)
CEL-16029	Recharging unit for battery pack
C6645	Recharging cable for B155

Notes: Additional to the above items, the appropriate CEL-630 Series and acoustic calibrator need to be purchased, together with Casella Insight Data Management Software.

### Casella CEL

Regent House  
Wolseley Road  
Kempston  
Bedford, MK42 7JY  
Tel: +44 (0) 1234 844100  
Fax: +44 (0) 1234 841490  
E-mail: [info@casellacel.com](mailto:info@casellacel.com)  
Web: [www.casellameasurement.com](http://www.casellameasurement.com)

### Distributed By:

