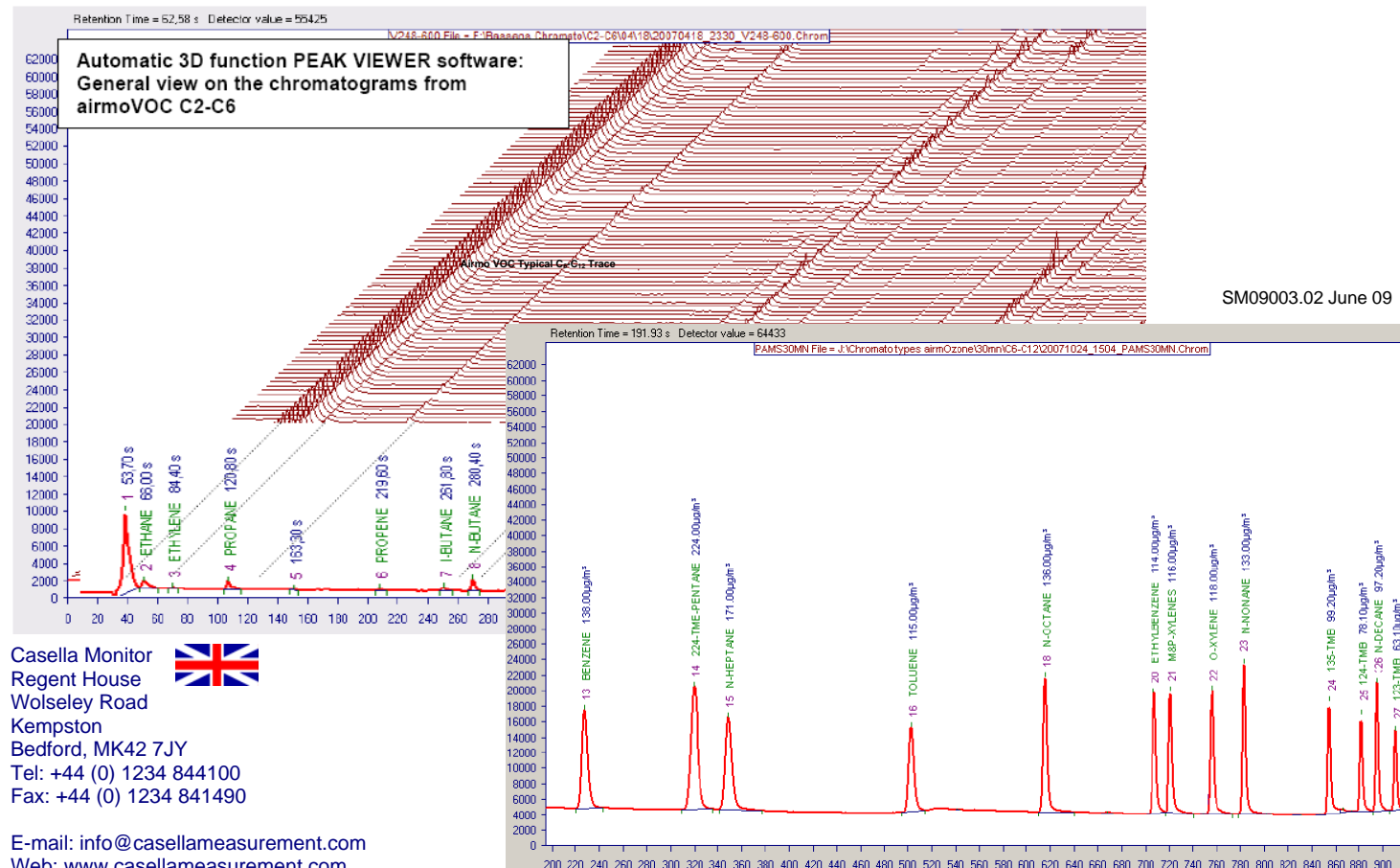


Chromatotec Product Range Overview

Model	Compounds	Conc	Loop/Trap	Detector	Gas	Application
Airmozone made up of Airmo VOC C₂C₆ +	VOC's C ₂ -C ₆	ppb	Trap Peltier cooler	FID	H ₂	Ambient / General
Airmo VOC C₆-C₁₂	VOC's C ₆ -C ₁₂	ppb	Trap	FID	H ₂	Ambient / General
AirmoBTEX	BTEX	ppt	Trap	FID	H ₂	Contaminated land-good separation
AirToxic	BTEX 1.3BD	ppb/ppt	Trap	PID	N ₂	Ambient- Good sensitivity
Chroma FID	VOC's, BTEX, light compounds	ppm	Loop	FID	H ₂	General
Chroma THC	VOC's, heavy CH ₄ etc	ppm	Loop	FID	H ₂	General
Chroma TCD	HC's, CO,CO ₂ ,N ₂	ppm / %	Loop	TCD	N ₂	Natural Gas
Chroma S	Sulphur, COS,SO ₂ CS ₂ ,H ₂ S	ppb/ ppm	Loop	FPD	N ₂	Paper, Waste water, Nat Gas in CO ₂
TRS-Medor	TRS, H ₂ S,MERCS,DMS	ppb	Loop	E.chem		Waste water / Ambient / Odour
Energy- Medor	Sulphurs, H ₂ S,Merc, THT	ppb/ppm	Loop	E.chem		Pressurised Nat Gas- Odourising

Casella Monitor also offer full in-house manufacture, test and calibration facilities. With full UK coverage and back up technical support via our 10 trained field service engineers you can be assured of quality data and service at all times. For further information on our complete range, please contact our technical sales support team or your local area manager.



Casella Monitor 
 Regent House
 Wolseley Road
 Kempston
 Bedford, MK42 7JY
 Tel: +44 (0) 1234 844100
 Fax: +44 (0) 1234 841490

E-mail: info@casellameasurement.com
 Web: www.casellameasurement.com

Chromatotec Gas Analysers



On - line Chromatography



Introduction

The comprehensive range of Chromatotec Gas Chromatographs (GC) provide automated continuous online analysis of over 50 organic compounds using measurement detection including PID, FID, FPD and electrochemical cells.

Complete systems incorporating GC, internal calibration, stream selectors, gas generators, industrial computer and data acquisition software can be provided offering turnkey solutions to online monitoring needs.

Monitoring Applications:

- Ambient Air Monitoring
- Emissions & Continuous Emissions Monitoring (CEM's)
- Pure Gas Manufacture / Testing
- Natural Gases / LPG Monitoring
- Odour Monitoring
- Process Monitoring



BTEX & VOC's

AirmOzone: For detection of VOC's C₂-C₁₂ or Ozone precursors. Cabinet systems designed for air monitoring networks with analysis and separation for more than 50 substances. Detection Limit < 0.05ppb.

Airmo BTX:

Utilises Flame Ionisation Detector (FID) with integral computer. TUV approved. CNR 2007 Certification. Excellent Separation. Very stable in time.

AirToxic BTX PID:

A GC/PID for automatic monitoring of BTEX in air, water and soils without requirement for H₂ gas. High sensitivity. Utilises Photo Ionisation Detector (PID) and integral computer. CNR 2006 Certification.

- Measures up to 8 compounds.
- Minimum detection limit: 10ppt.
- Robust, metal capillary column.
- Excellent separation.
- Adsorbent trap.
- Internal computer.
- Safe Nitrogen carrier gas.
- Compact, transportable.



Ozone Precursor System



Sulphurous Compounds & Mercaptans / TRS

TRS Medor:

The TRS Medor is a gas chromatograph dedicated to the Sulphur compound analysis (H₂S, Mercaptans Sulphides and Disulphides) present in different matrices.

- Electrochemical Detection Principle
- Detection limit 1ppb for H₂S
- ISO 6326/2. DIN 51855/7.
- Windows based software display for PC.

Energy Medor:

Dedicated to measurement of odourant Sulphur species in Natural Gas and LPG.

- Electrochemical Detection Principle
- ASTM D7493-08 Method.

Chroma S:

Used for detection of sulphurous compounds in air, emissions and pure gases. H₂S, Mercaptans, Sulphides, COS, SO₂, CS₂.

Detection via photometric detector double flame.

- Detection limit 7ppb.

Other Gases

Medor Cl₂:

For the measurement of Chlorine in Sulphur streams. Norm ISO 6326/2 and DIN 51855/7 for H₂S.

- Wet Cell Analysis
- Detection limit 0.3 ppm

Airmo H-CHO:

Is designed for measurement of Formaldehyde and Acetaldehyde in air or pure gas.

Chroma CO:

A gas analyser using flame detection with a catalytic methaniser module to analyse CO, CO₂ / CH₄ for monitoring gas purity and electronic gas measurement.

Other analysers and system combinations are possible.

