





What is insight?

- Casella **insight** data management software is designed for Health and Safety professionals.
- An advanced solution for downloading, managing and reporting exposure data.
- Designed for managing a variety of occupational hazards.





Key Features

- Supports Multiple Instruments
- Report Multiple Exposure Parameters
- Safe and Secure Data Management
- Manage Instrument Inventory and Calibration
- Intuitive User Interface
- Quickly Generate Comprehensive Reports
- Tabular and Graphical Analysis of Data
- Import Data from Existing Casella Packages
- Add New Instruments in the Future
- Share Information Easily with Others
- Integrated Help System



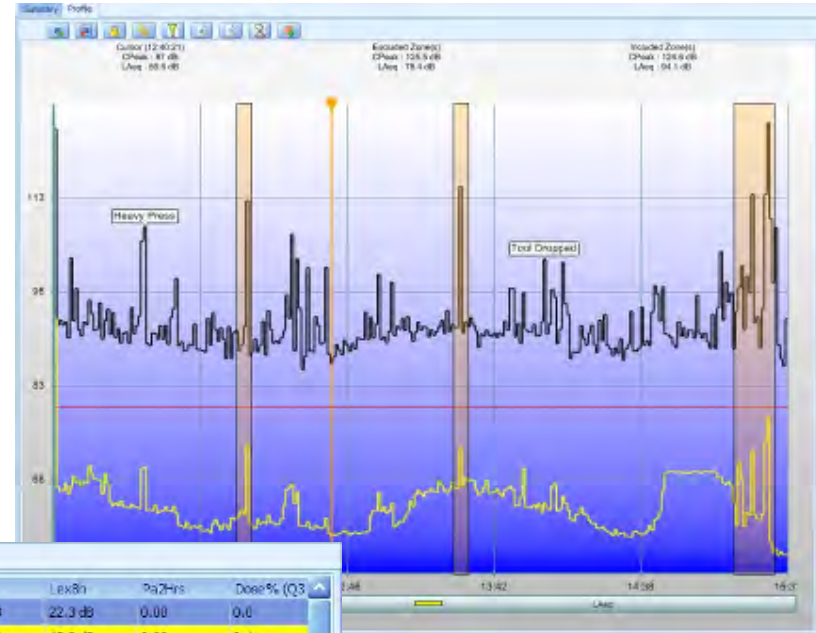
Applications

- Occupational Exposure Assessment
- Compliance with Health & Safety Legislation
- Record Keeping of Occupation Exposures
- Reducing Occupational Exposure
- Exposure Source Identification



Easy Exposure Analysis

- Colour coded results for exposure levels.
- Analyse time history profiles.
- Exposure Recalculations.
- Analyse exposure by person, place or process.

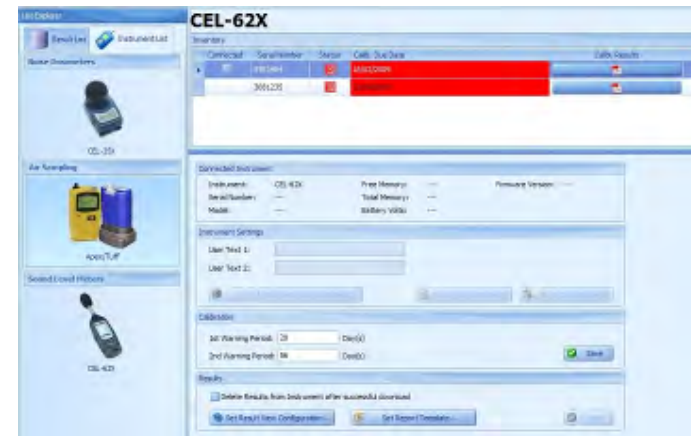


Serial Number	Start Date & Time	Duration HH:MM:SS	End Date & Time	Notes	LAeq	Cpeak	LeqD	Lex8h	Pa2Hrs	Dose% (Q3)
691514	17/03/2009 16:58:33	00:00:03	17/03/2009 16:58:36		---	85.8 dB	22.3 dB	22.3 dB	0.00	0.0
4281072	31/03/2009 13:52:16	00:00:06	31/03/2009 13:52:22		---	123.5 dB	45.2 dB	45.2 dB	0.00	0.1
691514	17/03/2009 16:58:30	00:00:06	17/03/2009 16:58:36		---	112.5 dB	38.1 dB	38.1 dB	0.00	0.1
4281072	01/04/2009 14:29:26	00:00:09	01/04/2009 14:29:35		---	114.3 dB	42.1 dB	42.1 dB	0.00	0.1
4281072	02/04/2009 04:13:36	00:00:13	02/04/2009 04:13:49		---	86.2 dB	19.6 dB	19.6 dB	0.00	0.0
491275	02/04/2009 02:27:24	00:00:14	02/04/2009 02:27:38		---	92.4 dB	21.2 dB	21.2 dB	0.00	0.0
691514	07/03/2009 16:58:36	00:00:06	07/03/2009 16:58:42		---	117.7 dB	38.1 dB	38.1 dB	0.00	0.1
4281072	31/03/2009 13:51:06	00:01:07	31/03/2009 13:52:13		---	123.4 dB	47.4 dB	47.4 dB	0.00	0.2
4281072	31/03/2009 18:42:51	00:02:39	31/03/2009 18:45:30		---	110.6 dB	41.8 dB	41.8 dB	0.00	0.1
4281072	31/03/2009 18:57:38	00:03:52	31/03/2009 19:01:30		---	109.9 dB	39.5 dB	39.5 dB	0.00	0.1
4281072	01/04/2009 11:24:42	00:15:53	01/04/2009 11:40:35		---	107.9 dB	44.5 dB	44.5 dB	0.00	0.1
691514	17/03/2009 13:42:50	00:35:20	17/03/2009 14:18:10		---	124.2 dB	70.9 dB	70.9 dB	0.04	48.9
691514	07/03/2009 16:58:36	00:00:06	07/03/2009 16:58:42		---	142.1 dB	66.3 dB	66.3 dB	0.00	0.1



Simple Instrument Configuration and Download

- ‘Plug & Play’ Download of Instruments
- Calibration Management and Certificate Storage
- Add New Instruments as Required
- Import Data from Existing Casella Software Packages
- Share Data Easily with Other PC’s or Colleagues





Manage Exposure Data

- Store Exposure Data by Person, Place, Process and Site.
- Store Data in Simple “tree View”.
- Familiar *Windows Explorer* interface.
- ‘Drag and Drop’ to organise your data.





Easily Generate Report

- Built in report wizard function.
- Report data from multiple exposure hazards and multiple measurements.
- Generate reports for individual people.
- Generate reports for groups of people by Place, Process or Site.





Contact Us

Click here:

info@casellameasurement.com